

## ST. STEPHEN'S WORSHIP SERVICE

Ready for your participation each Sunday morning.  
"Together in Spirit"

Worship in the comfort of your own home.

Go to the recording at **[www.stephenslutheran.org](http://www.stephenslutheran.org)**

*(Print the bulletin and Celebrate so you can read, sing  
and pray with Pastor Jim. Have some bread and  
wine/grape juice ready for Holy Communion)*

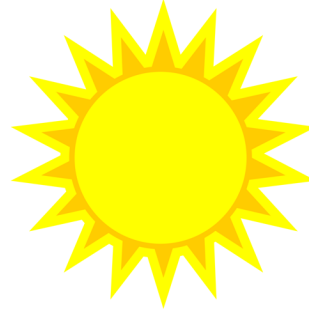
NEWSLETTER WAS SENT ON  
July 28, 2021

POST OFFICE:  
DATED MATERIAL  
PLEASE DO NOT DELAY

St Stephen's Lutheran Church  
2500 Soquel Avenue  
Santa Cruz, CA 95062

Non-Profit Org.  
Postage Paid  
Permit #7079  
Santa Cruz, CA 95060-9998

*St. Stephen's Lutheran Church*



***Sun***  
***August 2021***

## Sunday Worship Schedule

August 1, 15 & 29 – Website recording

We join our hearts in spirit as we participate together in worship through a recorded worship service on our website at "www.ststephenslutheran.org". Please be prepared by having the bulletin and Celebrate printed out, and sing along with Gary and Pastor Jim! Have some bread and fruit of the vine ready to take part in Holy Communion.

August 8 & 22 at 10am– In-person Outdoor & Livestream

Please bring your own chairs and wear a mask or two as we join together in worship. Holy Communion will be celebrated with the pre-sealed cup/wafer. After the service we will gather for fellowship under the awning adjacent to the disabled parking spots. BYO Coffee!

Beginning September 12 at 10:00 am-  
In-person INDOOR Worship Every Sunday!

Readers and Prayer Assistants are always welcome.

***St. Stephen's Lutheran Church***  
***Evangelical Lutheran Church of America***  
***2500 Soquel Avenue, Santa Cruz, California 95062***  
***Phone—831-476-4700 — Fax—831-476-3918***  
*www..ststephenslutheran.org*  
*email—office@ststephenslutheran.org*  
***Rev. James P. Lapp, Pastor***

Ministers: The Entire Congregation  
Church Council: Pres. — Renee Rice V.P.— Robert Bartee  
Secretary - Alyssa Burkhardt  
Treasurer— Kent Madsen  
Shelly Barker, Bill Schraft, Jay Johnston,  
Paul Cunningham, and Steven Hendrickson  
Director of Music: Gary Roberts  
Sunday School: Leslie Lapp  
Pre-School Director: Kathy Berens  
Custodian: John Hopping  
Church Administrator: Leslie Lapp  
Office Open: Mon.—Thurs. 8:30am—2:30pm  
Pastor Jim's Contact Hours — Mon.—Thurs. 9am—5pm at 831-325-9095

#### **MISSION STATEMENT**

St. Stephen's is a welcoming, healing community who worship God in Christ, nurture people growing in faith, serve others with acceptance and love, and invite people to share the joy of the Spirit.

#### **VISION STATEMENT**

To become an energetic, inclusive, multigenerational, multicultural, missional community that offers, hope, joy, worship, service, play, and life as disciples of Jesus Christ

# Birthdays & Anniversaries

8-3 Robert Gipson	8-18 Derek Poetzinger	8-3 Steve & Theresa Loback - Campbell
8-7 Pastor Herb Schmidt	8-19 Evelien Millang	8-6 Mark Linder & Mary Dean
8-9 Lydia Abler	8-20 Imagin Abler	8-15 Ross & Barbara Johnston
8-10 Daniel Grow	8-23 Kasey Garden	8-18 Vern & Linda Lillehaugen
8-14 Renee Rice	8-25 Lea Powers	8-28 Dan & Barbie Grow
8-15 Susan Oldfield	8-27 Leslie Lapp	8-30 Scott Ruble & Leslie Radford
8-17 Brad Cramer	8-28 Rachel Lapp	
	8-30 Emma Gipson	



**Short Term:** Rick & Susan Oldfield, Family of Lu Sluiter, Family of Jean Petersen, Lorie Juhl & Family of Betty Kievlan, Rachel Lapp and Dawit Yerda, Rachel B., Anne & Chloe Johnston, Jane Davis, Jo Ann, Leslie Lapp and Family, Healthcare workers, teachers, Marla Meek and family, Beth Stiles, Sandi Cane, Robbin, Nancy, Marisa, Margot Wilson, Kent, Family of Al Mitchell, Sam, George Webber & Family, Becky & Aaron Johnson, Nancy Hall family, Sadie, Lorraine Chavez, Lora Schraft Poulson, Nelleke, Hendrick, Don, Lina, Katarina, Taiyo, Mateo, Stephanie Jager, Casey, Cabel, Miller, Kyle, Noah, Esdras, Jenna Blair, Marissa Phillips, Immigrant families, The Homeless, Our Nation's leaders, Mt. Cross, St. Stephen's Child Development Ctr, Pastor Jim and Our Church Family. **Long Term:** The Sanders Family, Linda Johnson, Bailey Ingalls, Jan Shadle, Vi Olly, John B., Michelle, Josh, CJ, Jeff Tarantino, Susan Anderson, Rick, Bobbie Erickson, Edna Lindquist, Richard C., Eric VonSchell, Lauri Hollist, Ken Pahel, Pat M., Gary, Brouse Family, Janet Baker, Sandy Godvine, Janelle Yung, Chris & Lorie Juhl, Karin, Will, Chris, Pat Hubbard, Cathy, Pearl Runquist, Volpi & Robe Family, men and women of Armed Forces, and the Youth of today.

## El Salvador Sister Parish News

**Save the Date!** Planning continues for the *Family Fun(d) Fest* this fall, to be held October 9, 2021 from 2-4 p.m. at Christ Lutheran Church in Aptos. There will be activities, food, and beverages for all ages. Adult beverages will include local wine and beer. Last year, because of COVID-19, we held our first ever 'Virtual Wine Tasting Event' which was very successful, but we're all anxious to get out and socialize in person. Watch this space for more details as October draws closer.



**El Pilar Latrine Update** - Work continues on Phase 5 of the latrine project. I've included recent photos of two latrines.

**January 2022 Delegation** - We are planning a delegation in January 2022 depending on the situation with the pandemic here and there. If anyone is interested in participating, please contact Kent Madsen. Nine people from other churches have expressed interest in going. We are not asking for commitments yet, but would like to know what the level of interest is at St. Stephen's.

On behalf of the Board of Directors for Santa Cruz al Salvador (SCaS), I wish to thank all members of St. Stephen's who contributed towards sponsoring a child in El Salvador. Your gifts make a difference!

Peace in Christ,  
Kent Madsen, St. Stephen's representative on the SCaS Board of Directors



*from Pastor Jim*



### Reconciling In Christ Welcome Statement

(Approved at January 2020 Congregational Meeting)

**“We welcome all who are seeking God’s love and grace.**

**We welcome all because God welcomes all, regardless of race or culture, sexual orientation, gender identity, gender expression, or relationship status.**

**We welcome all without regard to addictions, physical or mental health, imprisonment, socio-economic circumstances, or anything that too often divides us.**  
**Our unity is in Christ.”**

I am leading my article with our most recent articulation of what kind of a church we profess to be and hopefully live up to. It is a statement that has become very important and necessary for a Christian church to make, especially as we experience a marked increase in divisiveness in our nation around the things listed above.

Given the Christian Church’s complicitness over the centuries (and still today) in creating and enforcing the exclusion of certain human categories from full participation in the life of the Church, it becomes incumbent upon us to make sure such a statement is made intentionally and clearly to our community.

This is an act of hospitality to strangers and people who may feel outcast and somehow “less-than” when it comes to their relationship with God and others. It is a way that we are helping such folks feel safe and belong here as God made them, as part of the Body of Christ at St. Stephen’s. And it needs to be explicitly stated because we must distinguish our church from those where those barriers and exclusions still exist.

It’s also a guiding statement for when certain opportunities present themselves, like the Facility Use Request we got from the Victory Outreach ministry recently. Some of you may remember that we had partnered with them some years ago as they met in our sanctuary on Sunday afternoons and Wed. nights. Their ministry is one that has led many of those in prison, gang members and other troubled folks to faith in Jesus Christ. It has transformed many lives—many of those that we would rarely see join in worship when we gather. They focus on reaching those that Jesus spent a great deal of time sharing with in his public ministry. Victory Outreach stopped meeting here on their own for unknown reasons several years ago.

Despite all the good reasons we partnered with them last time, we have changed since that time. And despite the good work they do with people who have been outcast, it is likely that the wording of our statement above is something they would not accept—especially with regard to sexuality and gender. So, I have contacted them and let them know who we are now and why this statement is important to us. As of press time, I have received no response for almost 2 weeks. I ask for your prayers as I and our Church Council communicate with them and discern the Spirit’s guidance about this.



## A Message From our Church Administrator

I had the privilege of studying "A Rhythm of Prayer" by Sarah Bessey with a fellow Pastors wife. Each chapter brought thoughtful discussion and inspiration. It is broken down into 3 parts: Orientation, Disorientation, and Reorientation. Guess which section I related most to? I have been "reorienting" to life post-accident, and am now reorienting to an almost empty nest, and we all continue to reorient as COVID sees fit.

Here are some quotes that I found very powerful:

*"May you feel at your darkest hour, when you are tired, that God is holding you tight. May you find a new rhythm of prayer that makes you sway, makes you kneel, makes you dance. May you be blessed with discomfort, wonder, and curiosity about the story with which we all continue to wrestle. May you be quieted by this love, may your striving and hustling pause for a moment so you can know Love is with you; Love is mighty to save; Love is your home. May you experience the surprising, open-door, generous, invitational, creative, disruptive, welcoming Love of God and may you leave these pages filled with unexpected hope."*

*"To hear God . . . You have to be willing to experience what's holy in places many people don't deem to be sacred."*

"We believe. So. Empower us to disrupt our broken thinking by learning TRUTH from diverse leaders. Enable us to discover the BEAUTY OF JUSTICE and inspire action in others. Embolden us to display your GOODNESS in the world."

And she uses my favorite verse - Micah 6:8

"What does the Lord require of you, but to do justice, love mercy and to walk humbly with God."

And when we are confused - Romans 8:26-28

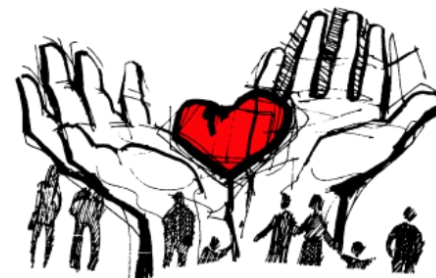
"If we don't know how or what to pray, it doesn't matter. He does our praying in and for us, making prayer out of our wordless sighs, our aching groans. He knows us far better than we know ourselves, knows our pregnant condition, and keeps us present before God. That's why we can be so sure that every detail in our lives of love for God is worked into something good."

Lets pray:

May we learn to sit with you, in silence, and know it is enough to know you and be known by you and know ourselves. Help us to listen to the truth you speak back to us. ~ Amen

## Benevolence Donations (Individual and Church)

2021 through June	
Am. Fdn. Suicide Prevention	\$235
SS Scholarships	\$195
Live Oak Resource Center	\$198
Habitat for Humanity	\$380
Mt. Cross	\$230
World Hunger	\$205
Housing Matters	\$0
CLU/PLTS	\$0
Lutheran Campus Ministry	\$32
SS CDC	\$395
El Salvador Sister Parish	\$50
Lutheran World Relief	\$65
ELCA Synod	\$500
COPA	\$1,00
Lutheran Immigration	\$0
Total	\$3,485
2021 Benevolence Target (10%)	\$14,360
% of Target	24%



Treasurer Notes ...  
 Budget Information · June 2021

	June	June	YTD	YTD	Net
	Actual	Budget	Actual	Budget	
Contribution Income	\$8,606	\$11,750	\$73,588	\$72,050	\$1,538
Facility Use Income *	\$538	\$917	\$41,517	\$5,500	\$36,017
Investment Income	\$4,601	\$3,750	\$16,635	\$22,500	\$-5,865
Total Income	\$13,745	\$16,417	\$131,740	\$100,050	\$31,690
Expenses	\$17,697	\$18,958	\$96,986	\$114,525	\$-17,539
Net	\$-3,952	\$-2,541	\$34,754	\$-14,475	\$ 49,229

\* Includes Child Development Center facility use @ \$300/month (when paid) + Misc. Income.  
 Contribution income for June was considerably below budget. On the other hand, we were blessed with \$7,500 in Miscellaneous Income in April as well as the income for the Paycheck Protection Program loan which was forgiven in April. Expenses have been reduced by the grant from the Silicon Valley Community Foundation for Pastor and Administrator salaries (those funds were fully used by the end of April).

While the church has restricted activities, our expenses continue. Thank you to those who have mailed contributions or made them online on our website.

Special funds for the Organ, Piano, Hearing Impaired  
 and Solar Electricity

	March	Reserve	Needed to Payoff
Organ	\$0	\$260	
Piano	\$27	\$112	
Hearing Impaired Equip	\$0	\$395	
Solar Electric Payback	\$286		\$14,621

Church Council Highlights  
 (meets 2nd Tuesday at 6:30pm.)



Devotion time was spent reviewing what our approach to re-opening indoor public worship is, from a biblical and Christian leadership perspective. We used the introduction from “Resuming Care-filled Worship”, which is a comprehensive focus produced by many mainline Protestant denominations in conjunction with the Roman Catholic Church. We were reminded about our role in the Christian church of especially thinking of the most vulnerable among us and how we can be the most welcoming we can be as the pandemic lingers on.

We reviewed the initial work of the Re-Opening Task Force and refined some of the ways in which we will gather from now on. The main changes will be mask-wearing, distributing the wine and grape juice from a pouring chalice, having a designated, gloved coffee server, goodies put on individual plates, placing the bulletins on a table with a 6ft. Distanced Greeter, offering plates at 4 different locations near the pews. A full description of our new expected practices will be given in our September newsletter in anticipation of our return to weekly in-person, indoor worship on Sunday, Sept. 12 at 10am.

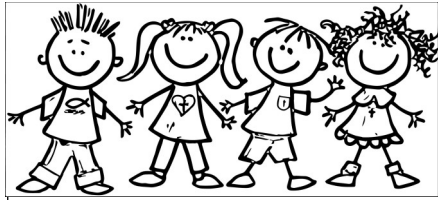
The Sustainability Task Force will be contacting our members in order to reconnect in anticipation of worshipping together in-person again. We will still be offering the livestream on our website and posting a recording later on that day. We are hoping to get a sense of where folks are at with their comfort level regarding how it is hoped participation in the worship life of our church will take place.

COPA has revived its Healthcare Access/ Behavioral Health Task Force, as we seek to bring a new County-wide “Access to Healthcare” agreement to all of the providers, including the new Kaiser facility being built very near to the church.

A new Facility Use Agreement was approved for a long-standing AA group that needs a new space to meet. They will use the sanctuary on Saturday evenings. The Scouts have begun meeting in the Fireside Rm on Tues. nights and the Ariose Singers will resume Tues. nights in the sanctuary in Sept.

The Security Task Force that was formed after our historic bell had been vandalized, met and reported its findings. Various video systems and levels of monitoring have been researched. It looks like we will most likely install our own video surveillance system that can be reviewed when necessary. The replacement “clapper” (ringer) for the bell will be able to be made by a local metal-works company for a reasonable amount.

Another Facility Use Agreement from Victory Outreach ministry was tabled. See Pastor Jim’s article for more info.



## Child Development Center

We bid farewell to 5 children leaving for Kindergarten. We will miss these children who were so amazing as they adjusted to so many changes during the covid-19 pandemic. They were a true source of joy. Seven children begin in August, one child Marcus, is Lupe's grandson, our friend from senior housing. The school will be closed for the week before Labor Day weekend so our teachers can rest before transitioning to the fall curriculum. We will continue to follow Covid-19 precautions for the unforeseeable future.

We are so grateful to Paul Cunningham for repairing and replacing the outdoor sinks on the playground. We are fortunate that he is sharing his time and talents as a friend to our preschool. Thank you Paul!!

I was able to travel to Montana to visit my parents for the first time in over a year. I spent time with my nephew sharing preschool activities during our week together. I met my 6 month old niece for the first time, so darling! I flew home with my mom to celebrate my grandson's third birthday where the family gathered together after two years, to have a reunion filled with hugs and laughs. My mom got to meet her 7 month great grandson for the first time. It was a very lively week at my house. I especially enjoyed having My 3 year old grandson enjoy playing with our students at the preschool. The highlight was Levi attending Chapel, singing and dancing with Pastor Jim. He loves Pastor Jim and blew him and Leslie a kiss as he said goodbye. It was magical when Leslie held Baby Luke for the first time as they delighted in each other's presence. I attended the worship service being recorded with mom and at the end Levi marveled at Gary's masterful playing of the pipe organ. As I write this I am going to see my great aunt today after so long who will turn 99! I leave again for Montana for the restful part of my vacation with a full heart from all of the reunions, feeling connected with those I love. I look forward to sewing counted cross stitch, reading, and walking in the gorgeous Montana forest. The next school year is filled with promise as we prepare to delight the children's sense of wonder at our Child Development Center.

Warmly, Kathy Berens

## "Be Civilized"

"Years ago, anthropologist Margaret Mead was asked by a student what she considered to be the first sign of civilization in a culture. The student expected Mead to talk about fishhooks or clay pots or grinding stones.

But no. Mead said that the first sign of civilization in an ancient culture was a femur (thighbone) that had been broken and then healed. Mead explained that in the animal kingdom, if you break your leg, you die. You cannot run from danger, get to the river for a drink or hunt for food. You are meat for prowling beasts. No animal survives a broken leg long enough for the bone to heal.

A broken femur that has healed is evidence that someone has taken time to stay with the one who fell, has bound up the wound, has carried the person to safety and has tended the person through recovery. Helping someone else through difficulty is where civilization starts, Mead said."

We are at our best when we serve others. Let's be civilized, shall we?

From Dr. Ira Byock's book on palliative care



**We all miss each other!  
Let us know what's been happening  
in your life.  
Your notes help keep everyone  
hopeful and joyful.  
Email it to church:  
"office@ststephenslutheran.org"**

## In Memoriam

**Jean Elizabeth Calvert** June 4, 1938—June 23, 2021

Jean was very beloved by many of us here, just like she was to so many of her Branciforte Middle School students and the many friends she made so easily. She came to our church later in life as a result of the friendships she had developed with two of her teaching colleagues at B40, who are also members of St. Stephen's, Ruth Mitchell and Leslie Mason.

Unfortunately, her obituary (Santa Cruz Sentinel, Sat. July 3) stated that there will be no planned Memorial Service at her request, but we will still find our ways to remember her well and entrust her to God. I was able to visit with Jean at Sunshine Villa on Beach Hill and share Holy Communion with her just before the pandemic restrictions went into effect.

She was always asking about our daughter Rachel and what adventure she was up to lately. Rachel also was a student at B40 and Jean was a kindred spirit in many ways. We also talked about her own adventurous spirit as I asked about a little painting hanging in her room that showed her whitewater rafting. I will cherish that visit all the more now.

Jean was well known as the conspirer with Rebecca Wickham to make sure that Don Smawley wasn't the only one to be famous for their after-church-goodies! We practically had brunch together under the pergola each time they hosted the Coffee Fellowship once a month. Jean will also be well-remembered for being one of (if not THE) oldest member of a delegation to our Sister Parish in El Salvador. It was amazing to see how undeterred she was from taking such an arduous trip despite her physical limitations and the challenges she faced from being born legally blind. I was forever blessed when she brought back a gift of a hand-woven stole for me after one of her visits there.

Jean also was an early supporter of our Child Development Center, and along with a few others provided a monthly scholarship for any families in need.

Another memorable event that some of you were able to attend with Leslie and I was a birthday celebration shortly after she had moved to Sunshine Villa, hosted by her gracious niece. It is good to remember that we were able to celebrate the gift she was to all of us while she was still alive. Jean is a real Santa Cruz treasure who lived here as long as I've been alive, and who showed us a way of life that we would all do well to emulate well into our older age: "Life should be fun, and it was."

Blessed be the memory of this child of God, and may light perpetual shine upon her.

## The Symptoms of Inner Peace

(Pastor Jim has kept this in his tattered collection of songs he has liked to sing for sermons, since his college days at Cal Lutheran 1982-86. He has no source for it, but it still makes a lot of sense and continues to hold true in so many ways.)

1. A tendency to think and act spontaneously rather than from fears based on past experiences.
2. An unmistakable ability to enjoy each moment.
3. A loss of interest in judging self.
4. A loss of interest in judging others.
5. A loss of interest in conflict.
6. A loss of interest in interpreting the actions of others.
7. A loss of ability to worry (this is a very serious symptom).
8. Frequent, overwhelming episodes of appreciation.
9. Contented feelings of connectedness with others and nature.
10. Frequent attacks of smiling through the eyes of the heart.
11. Increasing susceptibility to love extended by others as well as the uncontrollable urge to extend it.
12. An increasing tendency to *let* things happen rather than to make them happen.

*If you have all or even most of the above symptoms, please be advised that your condition of PEACE may be so far advanced as to not be treatable.*





## **Monthly Special Benevolence Offering**

### **August — California Lutheran University**

The ELCA social statement on education calls us to remember our roots: “From the time of the Reformation, the Lutheran church has been a teaching and learning church...With his teaching on vocation, Lutheran understood the Christian life to be one of service to God and neighbor in one’s every day places of responsibility; education equipped Christians for this vocation. He taught that education served the common good of Church and society: In a move unusual for his day, he taught that schools for all –both those who were wealthy and those who were poor, both boys and girls...”

For 60 years the congregations of the ELCA in the West, and its predecessor bodies have been committed to this idea of educating young people for lives of leadership and service in the world, and the establishment of CLU is the lasting mark of that commitment. By sending your people to CLU and supporting it with offerings and prayers, our congregations have continued in the rich tradition of a Lutheran understanding of education. As CLU President Dr. Chris Kimball writes, “CLU has emerged as a remarkable place where students, faculty, alumni and friends come together in a dynamic environment of academic excellence in the arts and sciences with a focus of service as well as vocational and spiritual exploration.”

**And**

### **Pacific Lutheran Theological Seminary Pacific Lutheran Theological Seminary**

We provide theological education for the training of clergy and lay leaders through ordination, non-ordination, and research level degrees and certificates.

PLTS is one of eight seminaries of the ELCA, a founding member of the [Graduate Theological Union](#), and a graduate school of CLU.

Theological education is done in the context of people who are rich and poor, liberal and conservative, and a wide array of human race, religion, sexuality, education, experience, and background. If our theology did not take all people into account, it would be deficient. PLTS develops leaders for the church by: deepening faith in Christ; challenging the mind; expanding the heart; and energizing for mission.

July: Homeless Service Center - \$ 140.00 was given (as of 7/26)

## ***An innovative approach Climate commitment fund bolsters ELCA World Hunger by John Potter (Living Lutheran)***

In 2019, Rick Steves’ company launched the Climate Smart Commitment Initiative, imposing on itself an annual “climate tax” that benefits organizations working to fight climate change, including ELCA World Hunger.

Climate change is real,” Steves said . “It hurts poor people in poor countries the hardest. And as travelers, we need to be honest: We’re contributing to it.”

It is widely reported that almost 80% of the world’s food is produced on small farms, but about half of the world’s undernourished people live on such farms. As the impact of climate change increases, the world’s food supply will become more insecure and hunger in many regions will increase.

While World Hunger’s partnerships are long established, these new and creative approaches continue to help guarantee food and income for families in the context of climate change.



## **Provide Lunches for Volunteers Tuesday, August 24 (4th Tuesday of each month)**

Contact church office if you can provide  
Sandwiches or Fruit, (everything else covered )

## **Habitat Cars for Homes program**

Donate your vehicle to Habitat for Humanity's car donation program, “Cars for Homes”, and help build strength and stability for families in our communities. 100% of net proceeds from the sale of your vehicle will fund our work helping local families here in the Monterey Bay area. Start your car donation to Habitat for Humanity Monterey Bay today online <https://www.habitatmontereybay.com/donate-a-car> or call (877) 277-4344